

Society for the Study of Social Problems

# Racial and Ethnic Minorities Division News

## Message From Our Chair

### Upcoming Deadlines

- Submission deadline for Annual Conference— January 31, 2005
- Student Paper Competition Deadline— February 15, 2005
- Feedback to Division Chair on Social Function— February 15, 2005
- Hotel reservations— July 25th 2005

As I assume the role of chair of the division there are some individuals I want to acknowledge for their service to the division. I would like to thank Stephani Williams for her dedication and hard work as chair of the division. During Stephani's leadership, the division continued to play important role in SSSP. She worked closely and effectively with other division leaders to maintain a strong presence in the Society. She has left a strong division and, because of her dedicated work, she has made my job that much easier.

As you may have noticed, the newsletter has a new editor. Unfortunately, Ramsi Watkins had to resign as newsletter editor rather suddenly. Ramsi did a wonderful job as the newsletter editor and we will definitely miss her. I would like to wish her all the best in her future

endeavors. I sincerely want to thank Dr. Melinda Messineo of Ball State University for agreeing to step into the void left by Ramsi's departure. Melinda has some big shoes to fill but I am certain she is up for the task. Knowing Melinda the way I do, I am sure you will see some changes in the newsletter that will increase the utility of the newsletter to you in your professional life. Melinda is open to any suggestions for changes or additions you would like to see in the newsletter. Please send her your suggestions so we can continue to focus the newsletter on items you would find helpful, important, or interesting.

I am looking forward to chairing the division for the next two years. The current state of the political and social world has presented many new challenges for racial and ethnic



Division Chair Lone DeOllos, Ball State University, Muncie, Indiana

minorities in the United States. The focus of the 2005 Annual meetings, as well as the sessions being sponsored or co-sponsored by our division, is demonstrative of the breadth of the issues which have surfaced (or re-surfaced) in the months since September 11, 2001.

*Chair's Message Cont.  
on page 3*

### Inside this issue:

Chair message	1
Upcoming Deadlines	1
Conference Submission Info	1
Session information	2
Student Paper Competition Info	3
We need your feedback!	3
SSSP Information	4

## Annual Conference Deadline Approaching

Send all papers, abstracts, or 2-3 page outlines to session organizers or Program Committee Co-Chairs, Tim Diamond and PJ McGann no later than **January 31, 2005**.

If your paper *does not* fit into one of the sessions sponsored by a division, send your sub-

mission via snail mail no later than January 31 to: Tim Diamond, Disability Studies, Ryerson University, 99 Gerard St. East, Toronto, Ontario, Canada M5B 2K3. W: 416-979-5000, ext. 4811; F: 416-979-5209; [tdiamond@oise.utoronto.ca](mailto:tdiamond@oise.utoronto.ca) and PJ McGann, Department of Sociology, University of

Michigan, 1225 South University, Ann Arbor, MI 48109-2590; W: 734-764-6321; F: 734-763-6887; [pjmcgann@umich.edu](mailto:pjmcgann@umich.edu). Questions relating to the program should be directed to them as well. **When sending an email, please place SSSP in the subject line.**

## Regular Sessions



Join our Division in Philly

**Session I:** Images of Race and Ethnicity in the Media

Organizer: Melinda Messineo  
Soc Dept, Ball State Univ  
Muncie, IN 46306  
W: 765-285-5530;  
F: 765-285-5920;  
[mmessine@bsu.edu](mailto:mmessine@bsu.edu)

**Session II:** How Welfare Programs Fail Recipients

Organizer: Frank S. Czarny  
Process Consultation,  
19822 North 129th Drive  
Sun City West, AZ 85375  
W: 623-544-6944;  
F: 623-544-6945;  
[fczarny@cox.net](mailto:fczarny@cox.net)

**Session IV:** Impact of 9/11 on Immigration: Anti-terrorism Policies

Organizer and Chair: Ione Y. DeOllos  
Soc Dept, Ball State Univ  
Muncie, IN 47306  
W: 765-285-5470; F: 765-285-5920; [ideollos@bsu.edu](mailto:ideollos@bsu.edu)

## Thematic Sessions

**Session III:** The Racial Consequences of Criminalizing Social Problems: Drugs, Homelessness and Poverty - **THEMATIC**

---

*Thematic—The Racial Consequences of Criminalizing Social Problems: Drugs, Homelessness and Poverty*

---

**Send papers to:**

Organizer and Chair: Ione Y. DeOllos  
Soc Dept, Ball State Univ  
Muncie, IN 47306  
W: 765-285-5470; F: 765-285-5920; [ideollos@bsu.edu](mailto:ideollos@bsu.edu)

## Co-sponsored Sessions

**Session XIII:** Attacking Obesity from a Community-Based Perspective (with Family Division)

Organizer:  
Martha Hargraves  
OB/GYN, Univ of TX,  
301 Univ Blvd, 301 Clinical Science  
Galveston, TX 77555  
W: 409-772-2777;  
[mhargrav@utmb.edu](mailto:mhargrav@utmb.edu)

Organizer: Jean Elson  
Soc Dept, Univ of New Hampshire  
Horton Social Science Center, 20 College Road  
Durham, NH 03824-3586  
W: 603-862-1885;  
[jelson@unh.edu](mailto:jelson@unh.edu)

Tempe, AZ 85287-4802  
W: 480-965-3932; F: 480-965-0064;  
[stephani.williams@asu.edu](mailto:stephani.williams@asu.edu)

**Session XXIV:** Native Americans and Inequality (with Poverty, Class, and Inequality Division)

Organizer:  
Trisha Robinson  
1200 Lakeshore Avenue #19E  
Oakland, CA 94606  
W: 510-282-0739; [boxen-trish@hotmail.com](mailto:boxen-trish@hotmail.com)

**Session XXI:** Retrospective on Affirmative Action (with Labor Studies Division)

Organizer:  
Stephani Williams  
Soc Dept, Arizona State Univ, PO Box 874802

**Session XVII:** Health Disparities (with Health, Health Policy, and Health Services Division)



Invite a student to send in a paper.

## Student Paper Competition—Deadline: 2/15/05

The Racial and Ethnic Minorities Division invites papers that cover any aspect within the field of race and ethnic relations. Papers may be empirical or theoretical. To be eligible, a paper must have been written in 2004, may not have been accepted for publication, or currently under review. Papers which have been presented at previous meetings or conferences are eligible. Papers must be single authored by the stu-

dent. Papers must not exceed 25 pages, including notes, tables, and references. Papers should be accompanied by a cover letter specifying their submission as consideration for the graduate student paper competition to: Ione Y. DeOllos, Department of Sociology, Ball State University, Muncie, IN 46306; W: 765-285-5470; [ideollos@bsu.edu](mailto:ideollos@bsu.edu). The winner will be announced in the spring 2005 and will receive a \$100 sti-

pend and a ticket to the SSSP awards banquet.



## Help Shape The Racial and Ethnic Minorities

### SOCIAL FUNCTION

Plans are currently underway for the organization of our social function in Philadelphia, but we need your input. Please let us know what you would enjoy doing and if you have any suggestions.

### A CALL FOR NEWS!

Do you have division related news to share? Do you have a book or article coming out you would like to direct division attention toward? Let us know...

### DIVISION SPOTLIGHT

In our next edition we would like to highlight the activities and accomplishments of some of our division members. Let us know who we might highlight.

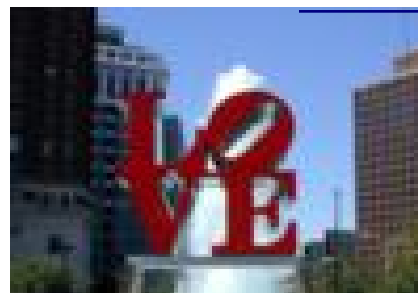
### LOST AND FOUND

Are you looking for a specific book, article, contact name, grant source, etc. but have not had any luck? Have you found a specific book, article, contact name, grant source, that you have no need for but think a col-

league might need? Let us know what it is you are looking for and we will post it.

Please send your ideas to Division Chair Ione Y. DeOllos, [ideollos@bsu.edu](mailto:ideollos@bsu.edu).

*We need your  
feedback by  
February 15,  
2005*



## Chair's Message cont. from page 1

Gary Fine has chosen the unintended consequences of social problems solutions or what he has termed "Blowback" as the focus for

the 2005 annual conference. In selecting this topic, he has challenged sociologists to consider taken-for-granted truisms and to investigate the surprising and sometimes

disturbing effects of our decisions and policies. The Philadelphia conference promises to be an exciting experience. You will definitely want to be a part of this conference,

so be sure to send your proposals in for consideration.

I hope to see you all in Philadelphia, Ione

**Division Chair Contact Information:**

Ione DeOllos

Department of Sociology

Ball State University

2000 W. University Ave.

Muncie, IN 47306

Phone: 765—

Fax: 765-285-5920

E-mail: ideollos@bsu.edu

## Purpose Statement of SSSP

This Society shall be a non-profit corporation to promote and protect sociological research and teaching on significant problems of social life and, particularly, to encourage the work of young sociologists; to stimulate the application of scientific method and theory to the study of vital social problems; to encourage problem-centered social research; to foster cooperative relations among persons and organizations engaged in the application of scientific sociological findings to the formulation of social policies; to foster higher quality of life, social welfare, and positive social relations in society and the global community and to undertake any activity related thereto or necessary or desirable for the accomplishment of the foregoing purposes.



## Consider Sending Your Conference Paper to *Social Problems*

Manuscripts for *Social Problems* should be prepared according to the style guide. Authors should submit five copies of their manuscript. These copies will not be returned. *Social Problems* requires no submission fee. However all papers accepted for publication pay a \$50.00 fee to help pay for copy editing and other editorial expenses. Papers written by graduate students or the unemployed are exempt from this fee. Submissions should be sent to:

When using the USPS:

James A. Holstein

Editor

*Social Problems*

Social & Cultural Sciences

Lalumiere 340

Marquette University

P.O. Box 1881

Milwaukee, WI 53201-1881

office: 414-288-5804

fax: 414-288-6444

When using express delivery (e.g.,

UPS, FedEx)

James A. Holstein

Editor

*Social Problems*

Social & Cultural Sciences

Lalumiere 340

Marquette University

526 N. 14th Street

Milwaukee, WI 53233

office: 414-288-5804

fax: 414-288-6444

